



Third Sector Forum December 2021



To support feedback, this session is being recorded



Please keep your microphone muted when not talking



Raise your hand or use chat when you want to ask a question

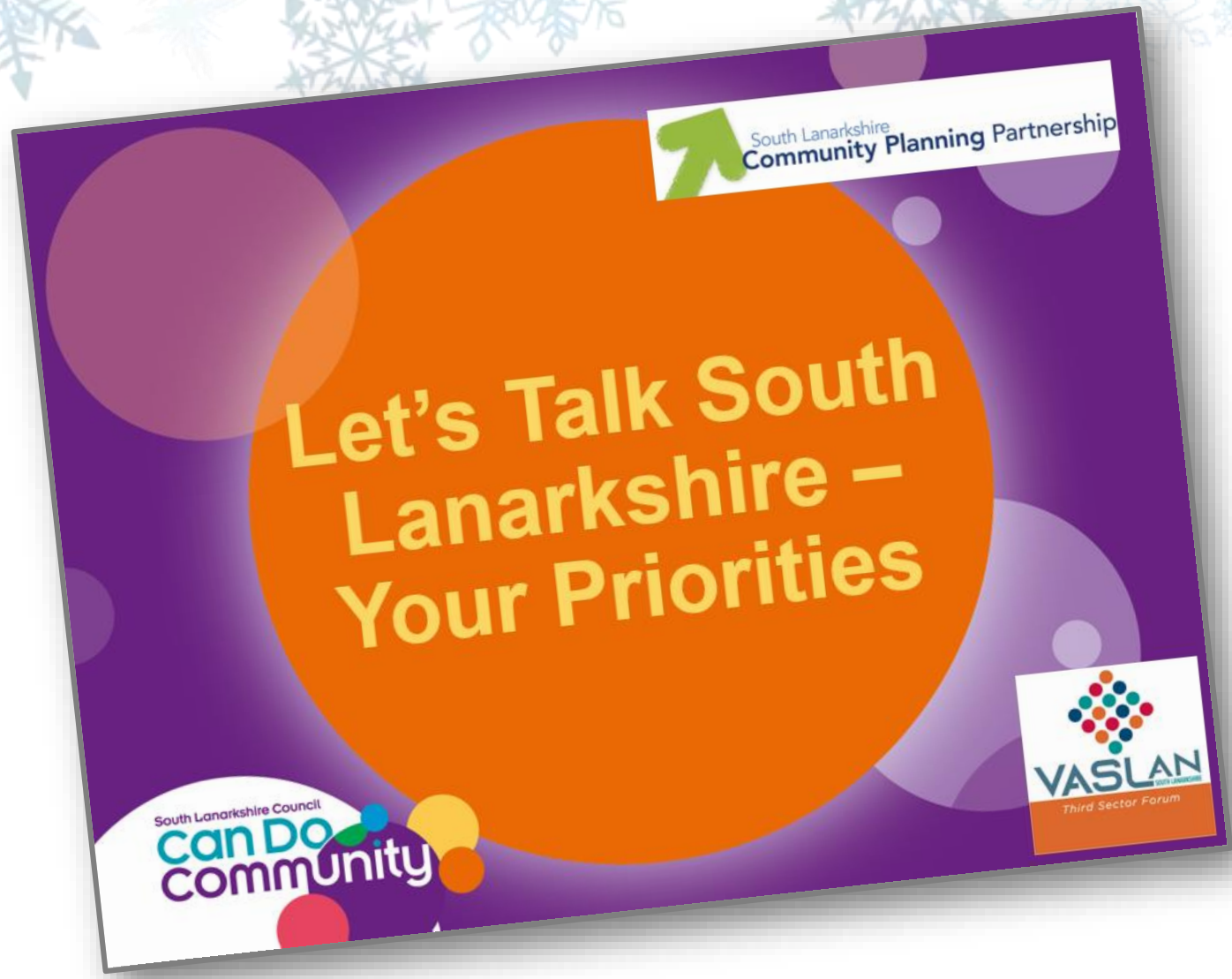
Agenda

- 1. Housekeeping & Welcome**
- 2. VASLan Update**
 - September Third Sector Forum
 - Membership Relaunch
 - Communities Mental Health & Wellbeing Fund
- 3. Support Available to Develop Enterprising Activity**
 - VASLan
 - Social Enterprise Network Scotland (SENScot)
 - Firstport
- 4. Made in South Lanarkshire Christmas Market**
- 5. Closing Remarks**



VASLan Update

September Third Sector Forum



Membership Relunched at November AGM



New Membership Program

Ready to Join as a Member?

FREE!

Membership Benefits Include:

- Promotional exposure of members services to partners and potential beneficiaries.
- Members-only community shared space with access to data intelligence.
- Access to VASLan managed funds.
- Access to third sector chief officers' group membership.
- Ability to vote at VASLan members meetings.
- It's FREE!

To apply please send email to:
membership@vaslan.org.uk

Include your **Name, Organisation, Address, Phone, and Email**

Communities Mental Health & Wellbeing Fund

The overarching aim of the fund is to support community-based initiatives that promote and develop good mental health and wellbeing and/or mitigate and protect against the impact of distress and mental ill health within the adult population

- South Lanarkshire allocation - **£880,000**.
- Application processes is now live. Small , Main and Partnership applications
- Fund to be fully allocated by **end of March 2022**.
- Third Sector Interface (TSI) leading on the process of application, evaluation and monitoring.

Communities Mental Health & Wellbeing Fund

11 Applications
2 Successful
9 awaiting Assessment

Total Amount Being Assessed

£100,616

Total Amount Awarded

£10,310

Total Amount Unallocated

£777074



Support Available
to Develop Enterprising Activity

VASLan

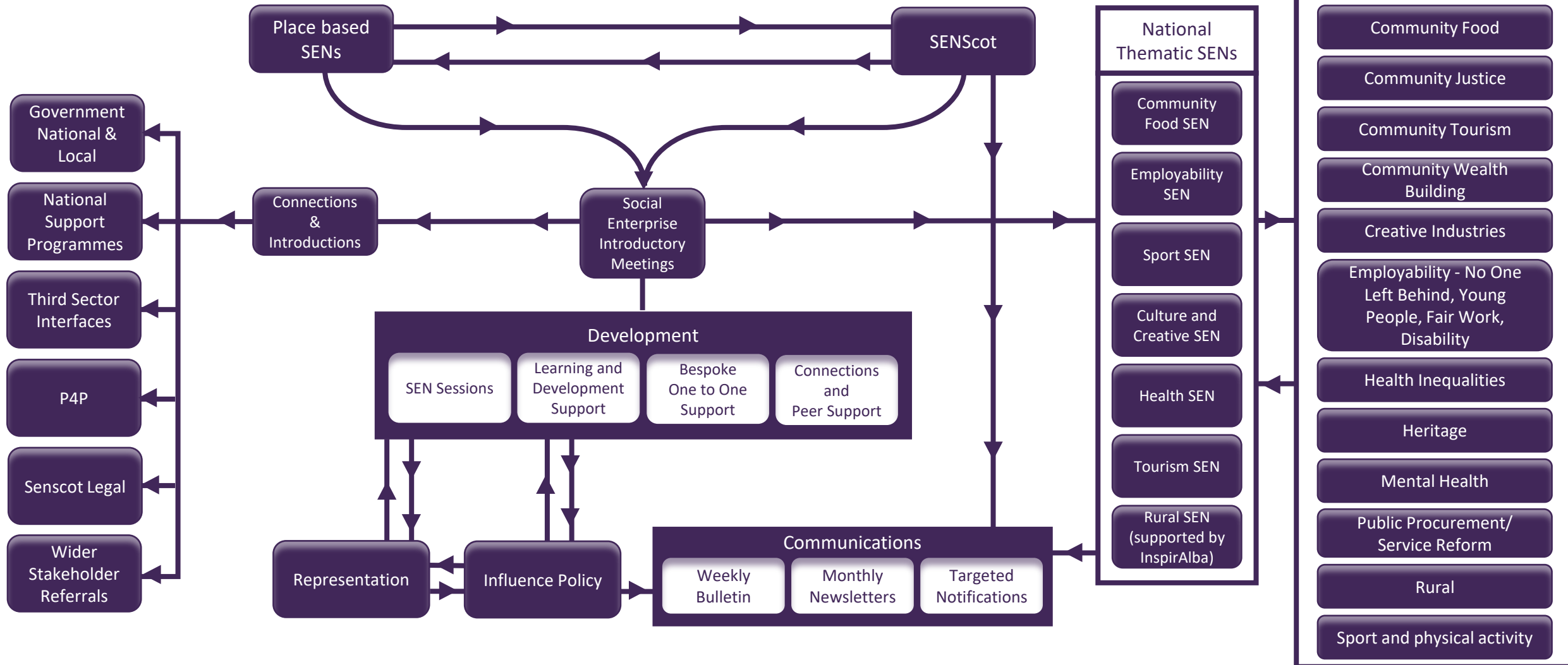


Peter McGhee
Sustainability & Collaboration
Development Officer



Monica Allen
Social Enterprise for Health
Development Officer

SENScot is a membership organisation and acts as the umbrella body for social enterprise Place based & Thematic networks in Scotland – Representing, promoting and supporting a network of networks





Who are Firstport?



just enterprise

Who can access Just Enterprise Start-Up support?

Individuals in Scotland with an interest or desire in starting a social enterprise – an idea, a social issue, and an enterprising solution.

What support is available?

- Business advice on a one-to-one or group basis.
- Workshops and webinars.
- Guidance and referrals to other valuable support.





**pounds for
purpose**

A programme that offers awards of £500, for individuals aged 16–26 looking to make a positive change in the issues that matter to them.

Start It



Who's it for?

Individuals who have a business idea that addresses a social, environmental, and/or community issue.

What do I get?

Up to £5,000 towards the start-up costs of your social enterprise idea, to get it off the ground.

Build It



Who's it for?

Social entrepreneurs who have tested a social enterprise idea and want to make it their full-time career.

What do I get?

Up to £25,000 towards living costs:

- ✓ Wages – up to £20k for one permanent wage or up to £25k split between two or more.
- ✓ Additional essential costs – if applying for one £20k wage, there is a further £5k available and awarded on a discretionary basis.

Boost It



A fund for social enterprises that require a higher injection of capital to get the business off the ground, or further financial support to strengthen and sustain trading. It offers repayable grants between £30K–50K.

Boost It funds ideas that:

- have been trading for three years or less
- can demonstrate a track record, or potential, of income generation and social impact.

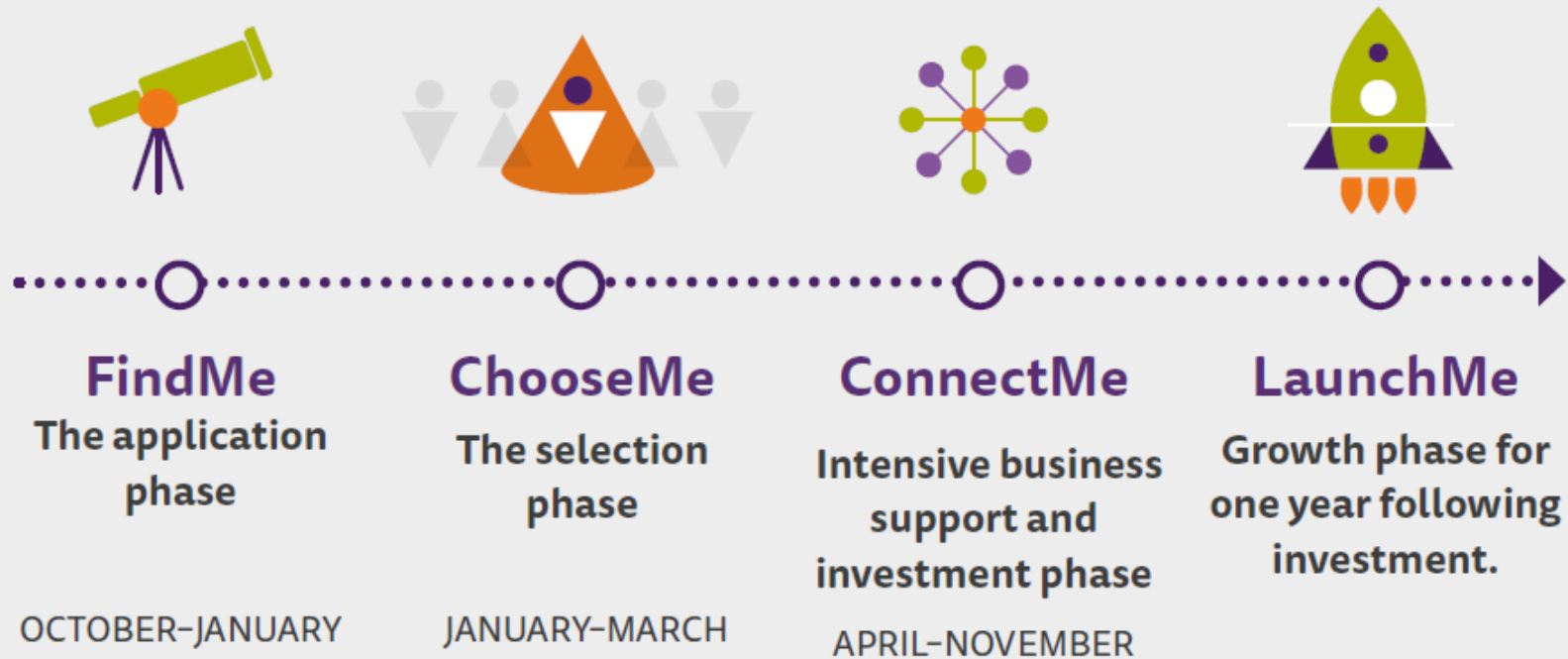


An accelerator programme for ambitious, social and community enterprises seeking to scale up their commercial and social impact.

It offers intensive business and investment readiness support, as well as seed funding. LaunchMe supports a cohort of up to eight social enterprises each year.






How does the programme work?








The Catalyst Fund

-  A new social investment product that supports ambitious social enterprises to start and scale their businesses.
-  A fund that offers loans starting at £50K using a flexible, revenue-based repayment model.
-  A joint venture between Firstport and Social Enterprise Scotland.



The
Catalyst
Fund

Who's it for?

-  Ambitious social enterprises in Scotland with high social impact potential.
-  Registered organisations (i.e. not individuals) with an asset lock in place.
-  Social enterprises that already considered other forms or providers of investment but unable to access them, or not suitable.



Website:

www.firstport.org.uk

Contact me:

kate@firstport.org.uk

General enquiries:

info@firstport.org.uk



Made in South Lanarkshire
Christmas Market

Clydesdale Community Initiatives

Third Sector Interface



Clydesdale Community Initiatives



www.cciweb.org.uk

Creative Strathaven CIC



Hole in My Pocket
'Dashing Through the
Snow Christmas
Card'

[£3.30](#)



Hole in My Pocket
'It's a Wonderful Life
Christmas Card'

[£3.30](#)



Hole in My Pocket
'May the Fourth
Mug'

[£12.00](#)

Creative Strathaven CIC



ionalundiedesign
'Ember Cufflinks'
[£55.00](#)



ionalundiedesign
'Ember Circle
Earrings'
[£20.00](#)



ionalundiedesign
'Enkindle Brass
Necklace 004'
[£60.00](#)

Creative Strathaven CIC



Looksee Illustration
'Black Fairytale
Rabbit Pin'

[£11.99](#)



Looksee Illustration
'Season's Greetings
Card'

[£3.75](#)



Looksee Illustration
'Ginger Fairytale Fox
Pin'

[£11.99](#)

Creative Strathaven CIC



Marc Peters Glass
'Christmas Jumper
Decoration'
[£14.00](#)



Marc Peters Glass
'Reindeer
Decoration'
[£14.00](#)



Marc Peters Glass
'Snowy Trees Candle
Holder'
[£25.00](#)

Creative Strathaven CIC



Rathbone Sass
'Russian Doll Cross-stitch Kit'

[£17.50](#)



Rathbone Sass
'Scottish Gins Cross-stitch Kit'

[£17.50](#)



Rathbone Sass
'Tartan Stag Cross-stitch Kit'

[£17.00](#)

Creative Strathaven CIC



St Mango 'Custard Cream Keyring'

[£6.50](#)



St Mango 'Flump Badge'

[£6.50](#)



St Mango 'Shrimps and Bananas Mug'

[£12.50](#)

Creative Strathaven CIC



www.creativestrathaven.co.uk



Feel the Warmth C.I.C.

FTW **FEEL THE WARMTH**

What is it made of?

1. Three layer softshell fabric

Back

Powerbank/ Battery

Front

(Powerbank not included)

07726 971317

info@ftwscotland.com

www.ftwscotland.com

f t w in

The advertisement features a white background with a black border. At the top left is the FTW logo, which consists of the letters 'FTW' in a bold, sans-serif font inside a red circle, with three wavy lines below it. To the right of the logo is the main title 'FEEL THE WARMTH' in large, bold, red capital letters. Below the title is the question 'What is it made of?' in a smaller, brown font. A list follows with one item: '1. Three layer softshell fabric'. Below this list are two diagrams of a rectangular device. The top diagram is labeled 'Back' and shows a simple outline with a small circular feature in the center. The bottom diagram is labeled 'Front' and shows a more detailed view with a dark rectangular area on the right side. To the right of these diagrams is an illustration of a powerbank with a red battery icon and a USB port, with an arrow pointing down to the front of the device. Below the powerbank illustration is the text '(Powerbank not included)'. At the bottom left, there is a telephone icon followed by the number '07726 971317' and an email icon followed by 'info@ftwscotland.com'. In the center bottom is the website 'www.ftwscotland.com'. At the bottom right are four social media icons: Facebook, YouTube, Twitter, and LinkedIn.

Feel the Warmth C.I.C.



FEEL THE WARMTH

www.ftwscotland.com



CamGlen Bike Town

Third Sector Interface



CamGlen Bike Town



C A M G L E N

BIKETOWN

www.biketown.org.uk





Questions?

Social Enterprise Products



<https://www.cciweb.org.uk/gif-t-shop>



<https://creative-strathaven-cic.square.site/s/shop>



<https://www.ftwscotland.com/shop/?orderby=price-desc>



<https://www.biketown.org.uk/shop/bikes-for-sale/>





Thank You