

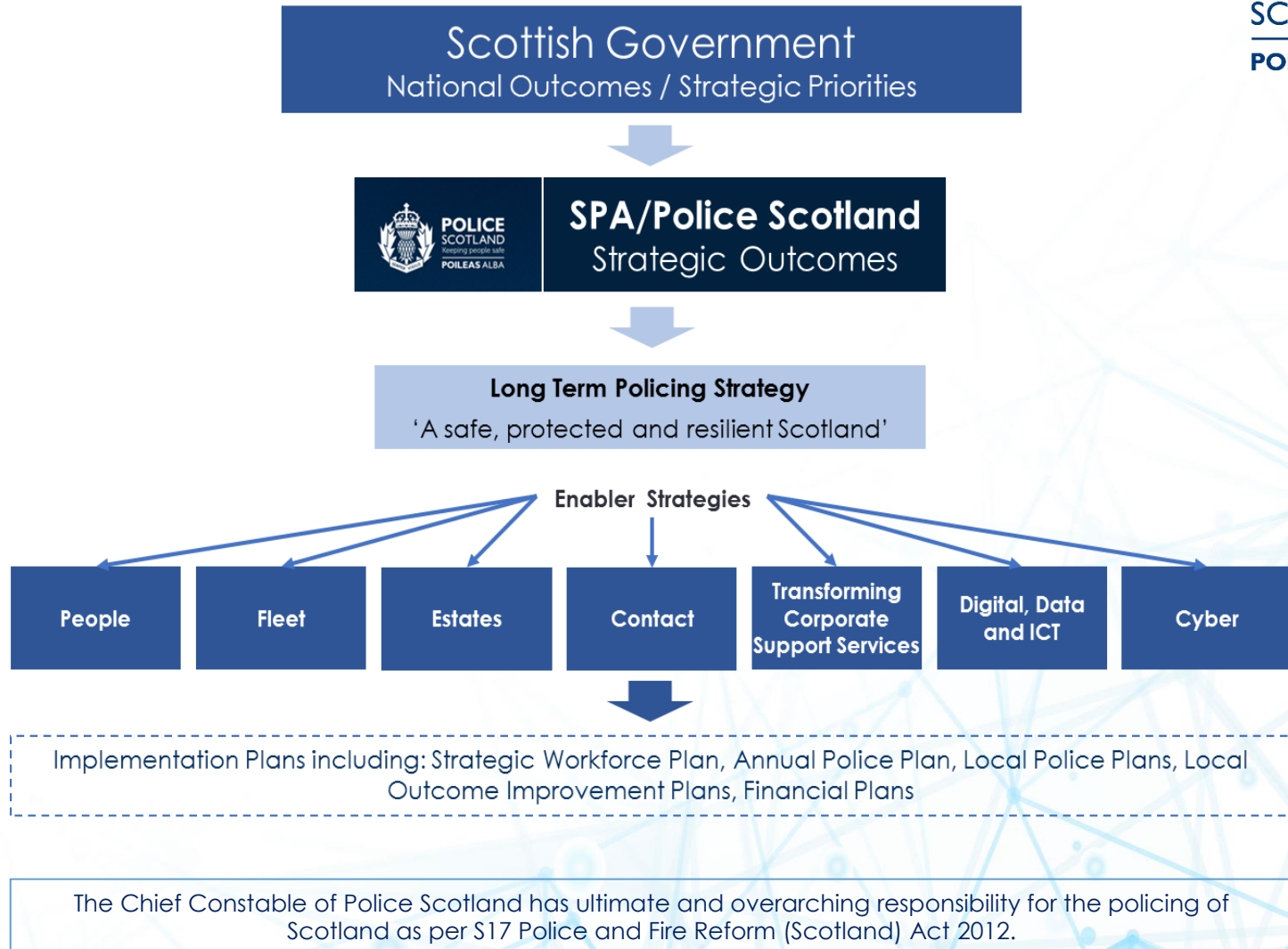
Local Police Plan 2020 - 2023



Our commitment to the safety and wellbeing of the people and communities of Lanarkshire

Q – Lanarkshire

Planning Framework



Contents



Local Police Commander’s Foreword.....	4
Focus on North Lanarkshire.....	5 - 8
Spotlight on South Lanarkshire.....	9 -12
Local Police Plan, Delivery and Scrutiny.....	13 - 23
Police Scotland - Contact Details.....	24

Local Police Commander's Foreword



As Divisional Commander for Lanarkshire Division, I am pleased to present the Local Police Plan which sets out the local police priorities and our key areas of focus in Lanarkshire Police Division, from April 2020 to March 2023. As part of a national police service led by the Chief Constable of Police Scotland, Lanarkshire Division has the privilege of serving communities in both North and South Lanarkshire.

We understand and respect the fact these communities vary in many ways and that each has its own sense of community, its own vision for the future and its own requirements of public services. Equally we recognise that many of our services are delivered collaboratively across Lanarkshire and in partnership with others. With this in mind this pan-Lanarkshire plan is designed to reflect this sense of local identity, combined with the collaboration required to deliver effective and efficient services by reflecting both local Authority areas in one plan.

The plan itself is a statutory requirement of the Police and Fire Reform (Scotland) Act 2012 and has been informed by consultation with communities and partners, and analysis of current and emerging threats and risks, to ensure that our priorities are based on the needs of the communities across Lanarkshire. It forms part of a broader planning process which takes account of the Scottish Government's vision for public services, the Police Scotland Annual Police Plan and Policing for a safe, protected and resilient Scotland, the Joint Strategy for Policing. In this plan we will provide some context on our communities and the local authorities we work alongside, the consultation, considerations taken into account in forming the plan and finally the priorities identified and how we seek to address these in the coming years.

Our efforts are underpinned by strong partnership arrangements with our Community Planning Partners in both North and South Lanarkshire. This ensures that our planning processes are aligned to the broader vision of the Community Plan and Neighbourhood Plans.

In Lanarkshire Division we will focus our efforts on those who cause the most harm within our communities, whilst maximising opportunities to reduce offending and prevent crime occurring in the first place. With the support of our partners, we will promote the highest standards in public protection and ensure the safety of the most vulnerable within our communities. We remain committed to continuous improvement in order to provide the highest level of service to our communities. To do this we will use our local policing teams supported by specialist support from national divisions in Police Scotland.

Our local communities are at the heart of everything we do -and indeed, the Local Police Plan, the areas of focus and the intended outcomes, can only be delivered with the continued support of our partners and communities.



**Chief Superintendent
Alan Waddell
Local Police Commander**

Focus on North Lanarkshire



Focus on North Lanarkshire

NORTH LANARKSHIRE is Scotland's fourth largest local authority area. Situated in the heart of Scotland it has first-rate connectivity to the rest of Scotland.

As the fifth most densely populated council area, North Lanarkshire is divided into 21 wards which are represented by 77 elected members.

Police Scotland serve the communities of North Lanarkshire from several hubs with a balance of resources including uniformed response officers and community officers, detective officers and police staff located across the division. In addition, there is the ability to draw on specialist resources from national divisions in order to support local policing in North Lanarkshire.

**LIVE
LEARN
WORK
INVEST
VISIT**

Lanarkshire Division of Police Scotland share the Local Authority's vision to make North Lanarkshire 'The place to Live, Learn, Work, Invest, and Visit.'

LOCAL PRIORITIES

North Lanarkshire has a shared ambition to deliver inclusive growth and prosperity. This work focusses on five complementary priorities, namely:

- Improve economic opportunities and outcomes.
- Support all children and young people to realise their full potential.
- Improve the health and wellbeing of communities.
- Enhance participation, capacity and empowerment across communities.
- Improve North Lanarkshire's resource base.

Police Scotland's Lanarkshire Division remains committed to working collaboratively with all partners across North Lanarkshire to achieve these shared ambitions.

COMMUNITIES

North Lanarkshire is home to a wide range of opportunities for the promotion of leisure activities that can benefit the health and wellbeing of individuals. This includes 6 country parks and gardens, 6 town parks, 9 local nature reserves, over 350 sites of importance for nature conservation and 171 play areas.

77% of residents living in the 20% most deprived areas think their neighbourhood has improved or stayed the same in the past three years (2016 survey).

95% of residents living in accessible small towns rate their neighbourhood as a very good place or good place to live.

There is a strong sense of community and in 2017 27% of adults provided unpaid help to local organisations, an increase from 16% in 2014.

There are higher levels of employment with major inward investments secured for future years.

Focus on North Lanarkshire



POPULATION

North Lanarkshire has an estimated resident population of around 340,000 people with 21,500 of these residents estimated to live in the 5% most deprived areas in North Lanarkshire.

The total population is predicted to rise by 1% by 2026 with the greatest change in population growth estimated to be those aged 65+.

There are around 151,000 households in North Lanarkshire with 57% of these being owner occupied (compared to the national average of 58%). North Lanarkshire Council is currently the largest local authority landlord in Scotland with a stock of over 36,000 homes. 24% of residents live in local authority owned homes, compared to 12% nationally.

2.1% of the population belong to an ethnic minority. North Lanarkshire has embraced the Vulnerable Person's Resettlement Scheme welcoming a number of refugees from Syria into the communities of Lanarkshire.

COLLABORATION

Police Scotland is committed to working collaboratively both locally and nationally. This is enshrined in law by the Police and Fire Reform (Scotland) Act 2012 but it is important to recognise that the police cannot eradicate crime alone and it must be a joint effort with communities and key partners.

Policing in North Lanarkshire is steeped in collaboration with strong partnership working established with other services, including community and voluntary organisations, communities themselves and local businesses.

Prevention is at the heart of what we seek to achieve, particularly in relation to our children and young people. Promoting positive influence, we have collaborated to introduce a number of School Community Police Officers, in some secondary schools to provide guidance and support to help our young people achieve great things.

CRIME AND JUSTICE

Some communities in North Lanarkshire report they felt crime has increased.

Overall, crime across North Lanarkshire has decreased by 15% compared to the 5 year average. However, there is still much more work to do and it is equally as important for communities to feel safe, as it is for them to be safe.

We believe an important part of that journey is reducing violence which must remain a local priority across North Lanarkshire.

Housebreaking impacts on an individual's own feeling of safety and security. Whilst down 5.2% from 2017/18 and 17.1% below the 5 year average, we agree with feedback it must be a local priority.

Equally, whilst sexual crime is decreasing and is down 19.9% since 2017/18 the very intrusive and invasive nature of this crime dictates that this must sit in Public Protection and protecting people at risk of harm as a priority for Lanarkshire Division.

Local Engagement in North Lanarkshire

Police Scotland officers and staff engage with communities across North Lanarkshire on a daily basis.

In addition to the everyday contact the public have with the police in their communities members of the Senior Management Team in Lanarkshire Division work closely with partners from statutory partners such as NHS Lanarkshire and North Lanarkshire Council as well as key partners from across the voluntary and community sectors.

In forming this Local Police Plan we considered the views of all services and sought feedback from communities across North Lanarkshire on where they felt officers

and staff in Lanarkshire Division should focus their efforts.

Additionally, we took into consideration a number of other matters including; the Police Scotland Strategic Assessment 2020/2023 which details threats that impact on policing at both divisional and Local Authority level; the North Lanarkshire Strategic Outcomes and Local Delivery Plan, Police Scotland's Annual Police Plan and Joint Strategy for Policing in Scotland.

In respect of the formal engagement, 587 individuals and 22 organisations responded. Based on all these factors the final Local Police Priorities were identified.

**LIVE
LEARN
WORK
INVEST
VISIT**



The top 5 areas, which NORTH LANARKSHIRE communities reported that Police Scotland should focus on were:

- Homes being broken into
- Selling or using drugs
- Road safety
- Rowdy, drunken behaviour in public places
- Violent Crime

Spotlight on South Lanarkshire

Spotlight on South Lanarkshire

SOUTH LANARKSHIRE is home to around 319,000 people and is one of the largest and most diverse areas of Scotland. As the fifth largest local authority it covers 180,000 hectares of land from close to the centre of Glasgow to near to the Scottish Borders. The area has a mix of urban, rural and former mining environments and whilst almost 80% of the geographic area is classed as agricultural, 70% of the population live in the major settlements in the north. There are 1,700 farms and 9,500 businesses.

South Lanarkshire is divided into 20 wards which are represented by 64 elected members. Police Scotland serve these communities from several hubs, recognising the blend of both urban and rural requirements of the 4 major towns and 30 other settlements. Police Scotland have the ability to draw on local and national resources to meet these needs. **Lanarkshire Division is committed to working with South Lanarkshire Council to improve the quality of life of its local communities.**

LOCAL PRIORITIES

South Lanarkshire Council sets out its aims which run to 2022 in its 'Connect' plan, with the vision 'to improve the quality of life of everyone in South Lanarkshire' being at the centre of the plan and underpinning everything it does.

The local priorities are defined by four key statements, namely to:

- Get it right for children and young people.
- Improve health and wellbeing.
- Promote economic growth and tackle disadvantage.
- Ensure communities are safer, stronger and sustainable.

Lanarkshire Division contributes to Community Hub multi-agency meetings which take place weekly across South Lanarkshire, to review emerging concerns in line with local priorities and ensure early intervention and resolution.

COMMUNITIES

South Lanarkshire celebrates a rich and diverse background, both in terms of the geographic settlements and the communities themselves. There are four towns with a population of more than 20,000 (East Kilbride, Hamilton, Rutherglen and Cambuslang).

South Lanarkshire maintains a stock of over 25,000 houses. The Strategic Housing Investment Plan sets out to deliver over 1,500 affordable houses in partnership with other social landlords up until 2022.

The Scottish Index of Multiple Deprivation has highlighted persistent levels of deprivation within a number of South Lanarkshire communities. With this in mind, tackling inequalities and building safer, healthier communities is essential.



Spotlight on South Lanarkshire

POPULATION

The total population in South Lanarkshire is predicted to rise by 2.4% by 2026 with the greatest change in population growth estimated to be those aged over 65. The number of people aged 80 to 84 is projected to increase by 50% whilst the number of people under the age of 25 is expected to fall by 2.9%. More specifically the number of people aged 20 to 24 is expected to decrease by 14%.

At a Community Area Level 23.9% of the 20% most deprived areas in South Lanarkshire are in the Hamilton area; 18.2% in Rutherglen; 14.8% in Cambuslang; and 11.4% in Blantyre.

14,000 (22%) of children in South Lanarkshire are living in poverty (23% nationally). Poverty has a grip on every town or neighbourhood but in some communities this can mean that it affects as many as 4 out of 10 children.

COLLABORATION

Police Scotland is committed to working collaboratively both locally and nationally. This is enshrined in law by the Police and Fire Reform (Scotland) Act 2012 but it is important to recognise that the police cannot eradicate crime alone and it must be a joint effort with communities and key partners.

Policing in South Lanarkshire is steeped in collaboration with strong partnership working established with statutory services, community and voluntary organisations, communities themselves and local businesses.

Prevention is at the heart of what we seek to achieve, particularly in relation to children and young people. Promoting positive influence, we have collaborated to introduce School Community Police Officers, in some secondary schools to provide guidance and support to help our young people achieve great things.

CRIME AND JUSTICE

The Scottish Crime and Justice Survey reports that 87.5% of people have not experienced crime in Scotland however some communities in South Lanarkshire report they felt crime has increased.

Overall, crime across South Lanarkshire has decreased by 23% compared to the 5 year average. However, there is still much more work to do and it is equally as important for communities to feel safe as it is for them to be safe.

We believe an important part of that journey is reducing housebreaking, a crime which impacts on an individual's feeling of safety and security. Whilst down 17% from 2017/18 and 26.4% below the 5 year average we agree it must be a local priority.

Violence remains too high and crimes of violence must be tackled. We must all do more to reduce this and it will be a local police priority across South Lanarkshire.

Equally, sexual crime remains all too common in society. The very intrusive and invasive nature of this crime dictates that this must sit in Public Protection and protecting people at risk of harm as a priority.



Local Engagement in South Lanarkshire

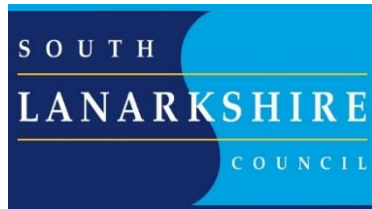
Police Scotland officers and staff engage with communities across South Lanarkshire on a daily basis.

In addition to the everyday contact the public have with the police in their communities members of the Senior Management Team in Lanarkshire Division work closely with partners from statutory partners such as NHS Lanarkshire and South Lanarkshire Council as well as key partners from across the voluntary and community sectors.

In forming this Local Police Plan we considered the views of all services and sought feedback from communities across South Lanarkshire on where

they felt officers and staff in Lanarkshire Division should focus their efforts. Additionally, we took into consideration a number of other matters including; the Police Scotland Strategic Assessment 2020/2023 which details threats that impact on policing at both divisional and Local Authority level; the South Lanarkshire Community Plan, Police Scotland's Annual Police Plan and the Joint Strategy for Policing in Scotland.

In respect of the formal engagement, 472 individuals and 17 organisations responded. Based on all these factors the final Local Police Priorities were identified.



The top 5 areas, which SOUTH LANARKSHIRE communities reported that Police Scotland should focus on were:

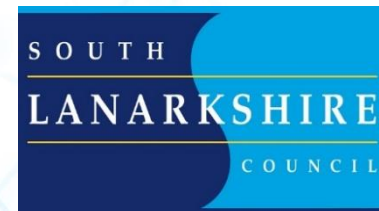
- Homes being broken into
- Road Safety
- Selling or using drugs
- Violent Crime
- Rowdy, drunken behaviour in public places



Local Police Plan, Delivery and Scrutiny



POLICE
SCOTLAND
Keeping people safe
POILEAS ALBA



Introduction to the Local Police Plan

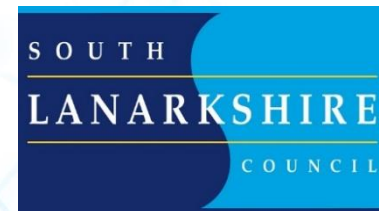
In this section we are pleased to define the Local Police Plan which sets out the Local Police Priorities and the Key Areas of Focus in Lanarkshire Police Division, from April 2020 to March 2023, which will enable us to achieve against Police Scotland's Strategic Outcomes.

The plan itself lays out the four Local Police Priorities before breaking them down into four Key Areas of Focus within each priority. This approach, based on consultation, strategic assessment and professional judgement will help define where we focus our attention over the following three years. Further to this, pages 17 to 20 break down each of the Local Police Priorities and Areas of Focus into 'things we will' do as a service to improve outcomes for the communities in Lanarkshire.

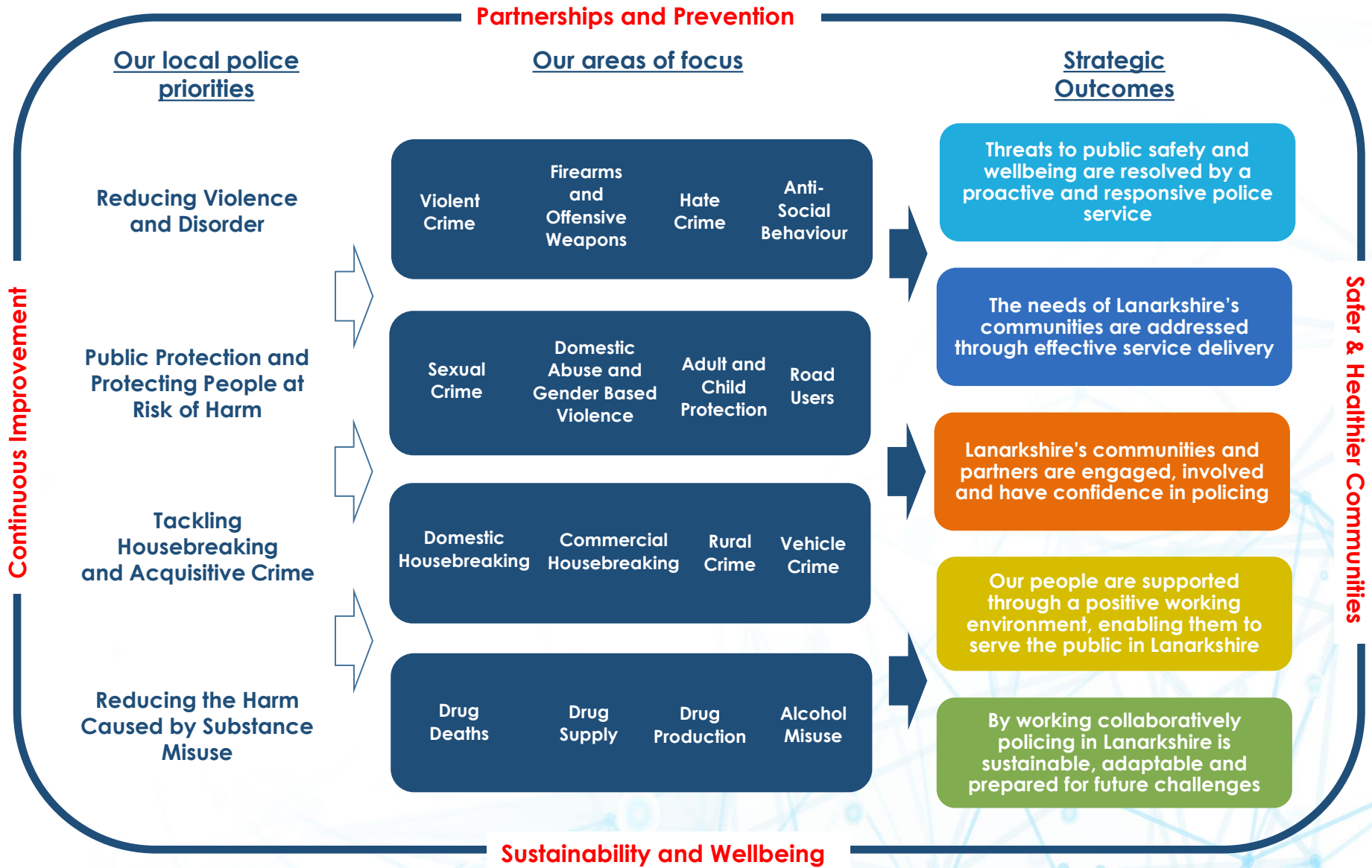
Whilst defining our Local Police Priorities is critical we will of course continue to focus on the wider context and environment in which we serve our communities. With this in mind the outer ring of our plan defines our considerations to ensure we integrate our priorities and complement other activities. On page 16 we explain what the inclusion of this wider context means to us in Lanarkshire Division.



**POLICE
SCOTLAND**
Keeping people safe
POILEAS ALBA



Local Police Plan on a Page



Local Police Plan – Broadening our Vision

Partnerships and Prevention

Partnerships are critically important in delivering positive outcomes for communities. They are defined as a Strategic Police Priority.

We will continue to work collaboratively to keep communities safe, sharing a collective responsibility to deliver preventative services that improve outcomes for individuals, increase resilience and address vulnerability.

The prevention of crime and disorder is a core principle of policing and has existed since the inception of the modern policing service. Prevention activities are now seen in a more holistic sense with primary prevention being the ultimate goal. We will continue to focus on preventative activities, working with communities and partners to support this.

Continuous Improvement

We will seek to deliver a high quality service, recognising the importance of learning and continuous improvement as a key part of the journey. By being open, transparent and responding to feedback from our communities, partners and people we will seek continuous improvement which will in turn build public confidence in local policing.

“Whilst defining our Local Police Priorities is critical we will continue to focus on the wider context and environment in which we serve our communities. With this in mind, the outer layer of our plan defines our considerations to ensure we integrate our priorities and complement other activities.”

Ensuring the Safety and Wellbeing of communities is something which is defined in the Police and Fire Reform (Scotland) Act 2012. It is something we will continue to pursue, seeking to support our diverse communities and those seldom heard. We will promote prevention activity and work collaboratively to consider the health and wellbeing of communities across Lanarkshire.

Safer & Healthier Communities

Delivering sustainable services and seeking to ensure our communities are sustainable will be an important part of our local police plan. Sustainability is defined as a Strategic Police Priority and we will continue to review and adapt our resources and plans for current and future social, economic and financial circumstances, considering the environmental impact of our policing practices.

We will remain committed to promoting the health and wellbeing of communities and all those who serve them, including our partners and our own people who deliver these key services. Wellbeing includes all aspects including physical wellbeing, mental wellbeing and where possible, financial health and wellbeing. We will seek to develop our people to maintain a balanced workforce and deliver a high standard of public service in order to promote public confidence.

Sustainability and Wellbeing

Reducing Violence and Disorder

The impact of violence and disorder on Lanarkshire's communities and the economy can be considerable and can have a significant detrimental effect on the life of those touched either directly, or indirectly. Whilst the Scottish Crime and Justice Survey reports that violent crime in Scotland is estimated to have almost halved since 2009 it remains unacceptable in a modern society. In Lanarkshire Division we will continue to adopt a partnership approach to reducing violence and disorder whilst prioritising prevention.

Our Areas of Focus

Violent Crime

Firearms and Offensive Weapons

Hate Crime

Anti-Social Behaviour

What We Will Do

Deploy officers based on intelligence and hotspot analysis to prevent violence occurring or intervene early.

Increase positive engagement with complainers of violence to maximise accurate reporting and investigation.

Reduce assaults on police officers and other emergency workers.

Reduce residential indoor violence by targeting repeat locations and offenders.

Reduce the number people carrying weapons through a range of tactics including prevention, early intervention and enforcement.

Reduce serious violent crime involving the use of weapons through the effective use of intelligence and enforcement.

Increase the disruption of persons involved in Serious and Organised Crime and reduce the number of violent crimes linked to feuds between crime groups.

Reduce hate crime, particularly crimes committed by young people, through effective engagement, education and enforcement.

Increase awareness to ensure effective use of third party reporting tools.

Increase consideration of mediation in relation to neighbour disputes with a hate crime element.

Decrease the sale of alcohol to young people, focussing on the providers and facilitators of illicit alcohol supply.

Work in partnership to proactively address challenges around problematic premises.

Increase effective use of existing legislation e.g. Anti-Social Behaviour Orders.

Work collaboratively to implement environmental changes to minimise anti-social behaviour in public places.

Public Protection & Protecting People at Risk of Harm

Protecting people at risk of harm lies at the heart of policing in Lanarkshire Division. We will continue to work collaboratively to increase awareness of all forms of abuse, exploitation and neglect with the focus being primary prevention and early intervention. We will continue to improve public confidence to further increase reporting and we remain committed to robustly managing those who pose the greatest risk of harm. In Lanarkshire, too many people are harmed whilst using our road networks and as such we will seek to protect vulnerable road users.

Our Areas of Focus

**Sexual
Crime**

**Domestic Abuse
and Gender Based
Violence**

**Adult and
Child
Protection**

**Road
Users**

What We Will Do

Focus on educating communities on issues of sexual crime such as consent and healthy relationships.

Improve reporting of sexual crime.

Increase capacity to prevent and detect cyber enabled sexual crime.

Focus on identifying and apprehending those causing the greatest harm across communities.

Increase awareness of domestic abuse and gender based violence to discourage offending and increase reporting.

Champion awareness and effective application of the Domestic Abuse (Scotland) Act 2018.

Continue to promote use of the Disclosure Scheme for Domestic Abuse to prevent repeat patterns of abuse occurring.

Increase awareness of Gender Based Violence.

Increase awareness of elder abuse with a view to reducing fraud and bogus work crimes.

Increase intelligence and awareness of Child Sexual Abuse, including online activity.

Continue to support School Community Officers engagement with young people to assist with their development and education.

Promote services which seek to properly support people's positive mental health.

Promote road safety, particularly in relation to vulnerable groups including younger and older road users.

Reduce road fatalities and serious casualties.

Focus enforcement activity on drink / drug driving and speeding.

Reduce the criminal use of roads by Serious and Organised Criminals.

Consider physical / environmental changes which support road safety.

Tackling Housebreaking and Acquisitive Crime

Whilst the volume of acquisitive crime continues to fall, in 2018 it accounted for around one fifth of all crime in Scotland. The impact of these types of crime extend far beyond practical inconveniences and often leads to people feeling unsafe in their own communities, losing irreplaceable personal belongings or impacting on the effectiveness of commercial enterprises or businesses. The importance of tackling these forms of crime came across strongly in the engagement activity and we will work further to focus on prevention, intelligence gathering, enforcement and public reassurance.

Our Areas of Focus

Domestic Housebreaking

Commercial Housebreaking

Rural Crime

Vehicle Crime

What We Will Do

Focus on education and prevention activity to minimise occurrence.

Commit specialist officers to investigate patterns of housebreaking and target repeat offenders.

Increase intelligence on the markets used to sell stolen property.

Deploy officers intelligently to prevent housebreaking occurring or intervene early.

Encourage and support businesses to invest in target hardening.

Maximise forensic opportunities and effective initial response.

Continue to develop intelligence around local and national offenders.

Work collaboratively with Road Policing to make criminal use of the road network more difficult.

Improve detection rates for all housebreakings.

Encourage effective prevention activities including marking of equipment and vehicles.

Increase intelligence on markets used to sell stolen property specific to rural environments.

Respond effectively to rural crime including the reports of crime involving livestock.

Increase the use of static road checks in rural locations to inhibit criminal use of the road network.

Tackle Serious Organised Crime Groups who exploit young people to commit high value vehicle crime.

Increase the use of mobile Automatic Number Plate Recognition.

Encourage prevention activity including the removal of property / tools from vehicles and trailers.

Increase intelligence in relation to the production of false or cloned number plates.

Reducing the Harm Caused by Substance Misuse

Lanarkshire's communities have the right to health and to live free from the harms of drugs and alcohol. Tragically deaths as a result of substance misuse continue to increase across both Lanarkshire and Scotland. Tackling this remains complex and requires a blended approach delivered cohesively by a number of partners. We must continue to understand that those experiencing problematic alcohol and drug use are often carrying other burdens and must be supported. The police also have a responsibility to uphold the laws of Scotland and in doing so, we will contribute to the efforts to eradicate substance misuse from our communities.

Our Areas of Focus

**Drug
Deaths**

**Drug
Supply**

**Drug
Production**

**Alcohol
Misuse**

What We Will Do

Collaboratively support education in relation to the risks of drug use, including multi-substance use.

Support partnership approaches to Recovery Orientated Systems of Care.

Maintain a focus on enforcement activity to minimise the exploitation of drug users by those who supply them.

Maximise referrals to partner agencies who can offer support.

Increase intelligence and detections in relation to the supply of all drugs.

Focus in particular in improving intelligence on prescription medication which is misused.

Maintain a focus on enforcement activity to minimise the exploitation of drug users by those who supply them.

Disrupt Serious and Organised Crime Groups through enforcement and seizures under the Proceeds of Crime Act.

Work collaboratively with landlords and agents to minimise the use of premises used in the production of cannabis.

Focus on the Serious Organised Crime Groups coordinating drug production activity.

Work collaboratively to tackle human trafficking adopted to aid the production of controlled drugs.

Maximise intelligence opportunities relating to the production of controlled drugs.

Work in partnership with licenced premises to promote and recognise good practice e.g. 'Best Bar None'.

Monitor compliance with licensing laws of all licensed premises including a presence at heightened periods of demand.

Continue to discourage youth drinking through landscape changes, licensed premises campaigns and both diversionary and where necessary, enforcement activity.

Scrutiny and Accountability



The Police and Fire Reform (Scotland) Act 2012 provides a framework for local scrutiny and engagement arrangements between Police, Fire and Rescue Service and the Local Authority. The current format has been in place since April 2013 and will continue with quarterly meetings where the Local Police Commander (Chief Superintendent), supported by the Senior Management Team and Local Area Commanders present a report to the Local Authority outlining police performance measured against the Local Police Plan. This provides opportunities for locally elected members to examine and hold police to account in relation to the delivery of local policing services.

Local scrutiny of police services in North Lanarkshire is carried out through the Community Safety Partnership Forum. In South Lanarkshire this is undertaken by members of the Safer South Lanarkshire Board. These structures are utilised to consider matters relating to the police service and the council's involvement with the Scottish Police Authority and Police Scotland including arrangements for the council's contribution to local policing and the development and implementation of the local police plan. They consider statistical reports from Police Scotland in relation to the council area and also use it to assess the adequacy and effectiveness of local policing plans in terms of priorities, performance and community engagement to provide reasonable assurance of effective and efficient implementation and operation. Minutes for meetings in North Lanarkshire are available on the website and by request for South Lanarkshire.

In addition to these measures, the Divisional Senior Management Team are accountable to a number of internal governance procedures in addition to that of the Scottish Police Authority, Her Majesty's Inspectorate of Constabulary and the Police Investigation and Review Commissioner.

Equality, Diversity and Human Rights



**POLICE
SCOTLAND**
POILEAS ALBA

Police Scotland promotes equality and diversity, both externally and internally, striving to exceed the requirements of the Scottish Public Sector Equality Duty. Across Police Scotland we are committed to developing and promoting best practice in the advancement of our Equality Outcomes. In order to support this requirement, we embed equality, diversity and human rights in all of our strategies, plans and performance framework.

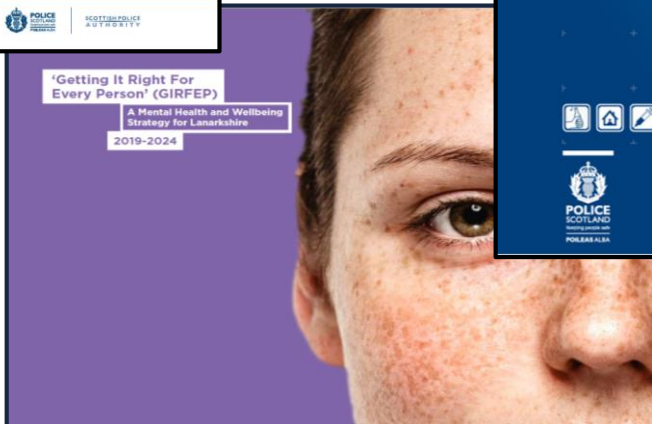
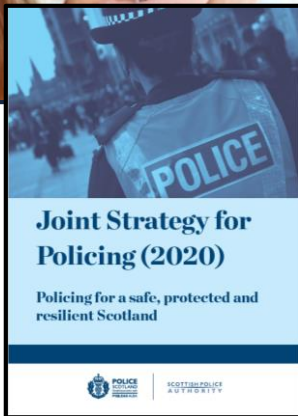
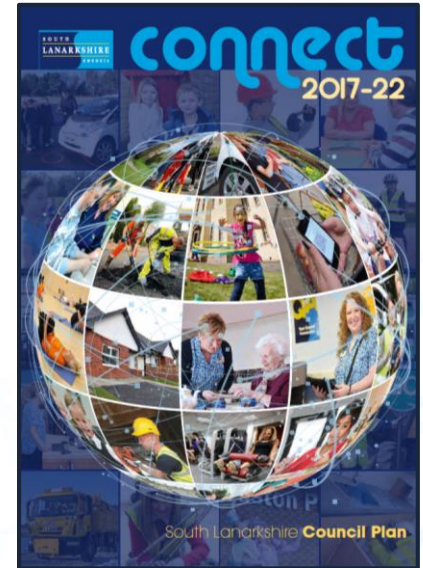
Equality and Human Rights Impact Assessments (EqHRIA) are used to help us to ensure that policy and practices proactively consider the potential impact on equality and human rights. We will ensure that all of strategic plans and activities relating to delivery are assessed to a high standard using relevant evidence in a systematic and structured way.

Cohesion and Collaboration



This Local Police Plan is intrinsically linked to a number of other plans being implemented across Lanarkshire.

Officers and staff work collaboratively across both North and South Lanarkshire to meet the needs of local communities whilst seizing opportunities to work in partnership where possible to address issues which affect communities across Lanarkshire, regardless of their geographic location.



Police Scotland Contact Details

Lanarkshire Divisional Headquarters

Motherwell Police Station
217 Windmillhill Street
Motherwell
ML1 1RZ

We are here to help.

For more detailed information about your local policing teams and other services that Police Scotland provides, please refer to the Force website at www.scotland.police.uk
Dial **999** for an emergency that requires urgent police attention. For non-emergency contact call **101** the single non emergency number.

If you have information about crime in your area and wish to provide it anonymously, call **CRIMESTOPPERS** on **0800 555 111**.

Service users who are deaf or have a hearing impairment can contact Police Scotland via TextRelay in an emergency on **18000** or non emergency on **18001 101**.



**POLICE
SCOTLAND**
Keeping people safe
POILEAS ALBA

